

Tandara

FIFTH WHEELS

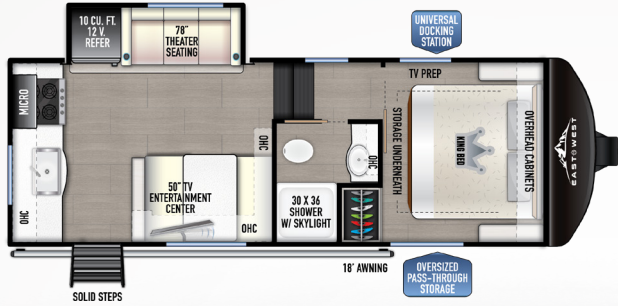
2025 FLOOR PLAN GUIDE



EastToWestRV.com/Tandara
A DIVISION OF FOREST RIVER



TANDARA HALF-TON FIFTH WHEELS



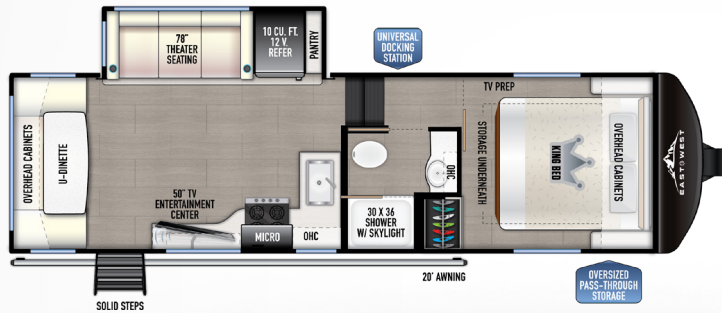
22RK

REAR KITCHEN SINGLE SLIDE

HITCH (LBS.): 1,170 UVW (LBS.): 7,724 CCC (LBS.): 3,616

LENGTH: 27' 3" EXTERIOR HEIGHT: 12'-5" WIDTH: 96"

TANKS (F/G/B): 64 / 88 / 44 AWNING: 18'



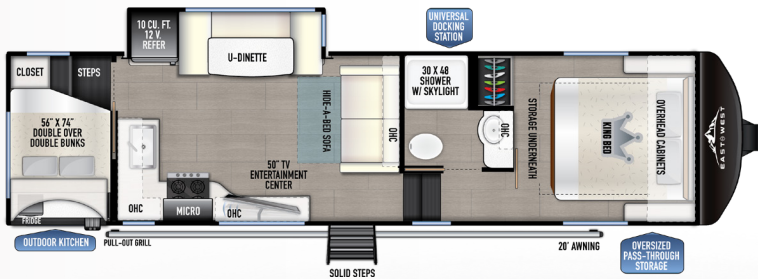
26RD

REAR DEN SINGLE SLIDE

HITCH (LBS.): 1,235 UVW (LBS.): 8,024 CCC (LBS.): 3,621

LENGTH: 29' 9" EXTERIOR HEIGHT: 12'-8" WIDTH: 96"

TANKS (F/G/B): 64 / 84 / 44 AWNING: 20'



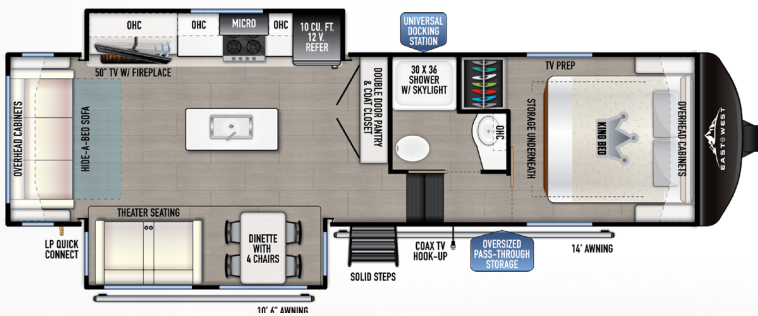
27BH-OK

BUNK HOUSE W/ OUTDOOR KITCHEN

HITCH (LBS.): 1,360 UVW (LBS.): 8,834 CCC (LBS.): 4,526

LENGTH: 33' 2" EXTERIOR HEIGHT: 12'-6" WIDTH: 96"

TANKS (F/G/B): 64 / 88 / 44 AWNING: 20'



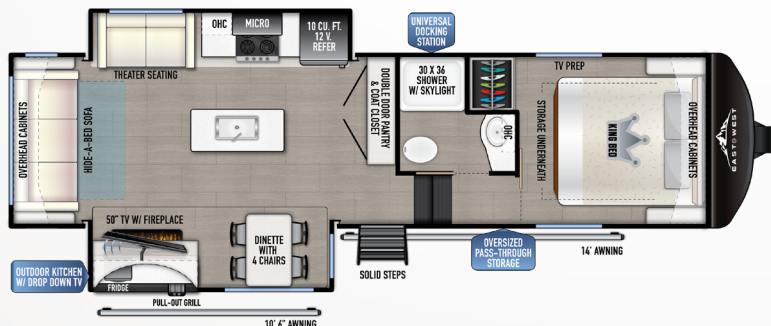
28RL

REAR LOUNGE DOUBLE SLIDE

HITCH (LBS.): 1,590 UVW (LBS.): 9,414 CCC (LBS.): 2,376

LENGTH: 33' 2" EXTERIOR HEIGHT: 12'-9" WIDTH: 96"

TANKS (F/G/B): 64 / 71 / 44 AWNING: 10'6" & 14'



28RL-OK

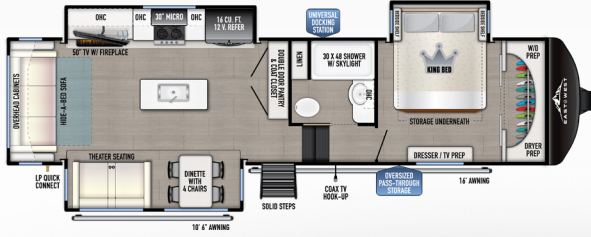
REAR LOUNGE W/ OUTDOOR KITCHEN

HITCH (LBS.): 1,520 UVW (LBS.): 9,639 CCC (LBS.): 2,081

LENGTH: 33' 2" EXTERIOR HEIGHT: 12'-9" WIDTH: 96"

TANKS (F/G/B): 64 / 71 / 44 AWNING: 10'6" & 14'

TANDARA PREMIUM FIFTH WHEELS



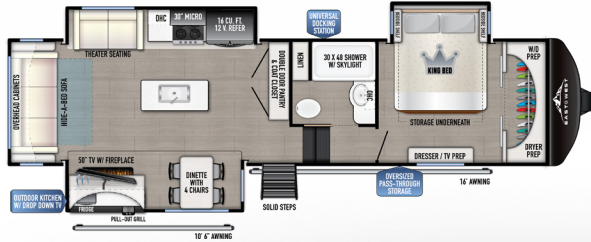
320RL

REAR LOUNGE TRIPLE SLIDE

HITCH (LBS.): 2,125 UVW (LBS.): 10,525 CCC (LBS.): 3,541

LENGTH: 35' 4" EXTERIOR HEIGHT: 13' 2" WIDTH: 96"

TANKS (F/G/B): 64 / 88 / 44 AWNING: 10'6" & 16'



321RL-OK

REAR LOUNGE TRIPLE SLIDE W/ OUTDOOR KITCHEN

HITCH (LBS.): 2,040 UVW (LBS.): 11,239 CCC (LBS.): 2,801

LENGTH: 35' 4" EXTERIOR HEIGHT: 13' 2" WIDTH: 96"

TANKS (F/G/B): 64 / 88 / 44 AWNING: 10'6" & 16'



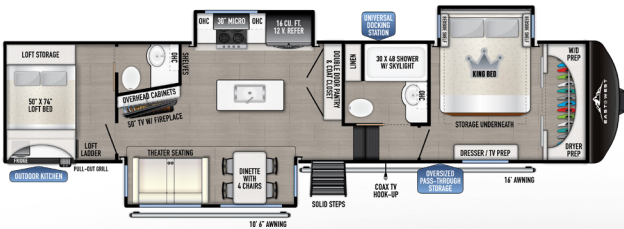
340RD

REAR DEN TRIPLE SLIDE

HITCH (LBS.): 1,980 UVW (LBS.): 11,219 CCC (LBS.): 2,761

LENGTH: 37' 7" EXTERIOR HEIGHT: 13' 2" WIDTH: 96"

TANKS (F/G/B): 64 / 88 / 44 AWNING: 20'



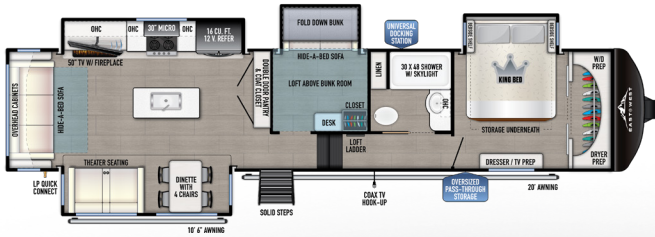
375BH-OK

BUNK HOUSE HALF BATH & OUTDOOR KITCHEN

HITCH (LBS.): 2,645 UVW (LBS.): 12,584 CCC (LBS.): 4,061

LENGTH: 40' EXTERIOR HEIGHT: 13' 4" WIDTH: 96"

TANKS (F/G/B): 64 / 88 / 88 AWNING: 10'6" & 16'



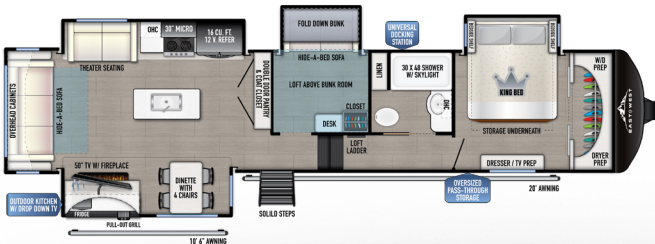
385MB

MID-BUNK ROOM W/ DOOR SIDE WINDOWS

HITCH (LBS.): 2,270 UVW (LBS.): 12,984 CCC (LBS.): 3,286

LENGTH: 41' 3" EXTERIOR HEIGHT: 13' 4" WIDTH: 96"

TANKS (F/G/B): 64 / 88 / 44 AWNING: 10'6" & 20'



386MB-OK

MID-BUNK ROOM W/ OUTDOOR KITCHEN

HITCH (LBS.): 2,215 UVW (LBS.): 13,179 CCC (LBS.): 3,036

LENGTH: 41' 3" EXTERIOR HEIGHT: 13' 4" WIDTH: 96"

TANKS (F/G/B): 64 / 88 / 44 AWNING: 10'6" & 20'



387BH

REAR BUNK W/ LOFT

HITCH (LBS.): 2,220 UVW (LBS.): 12,960 CCC (LBS.): 3,201

LENGTH: 42' 1" EXTERIOR HEIGHT: 13' 5" WIDTH: 96"

TANKS (F/G/B): 64 / 132 / 88 AWNING: 10'6" & 15'



TRAVEL TRAILERS



TOY HAULERS



FIFTH WHEELS



MOTORHOMES

EAST TO WEST TAKES PRIDE IN OUR FIVE GUIDING PRINCIPLES AND OUR CORPORATE PHILOSOPHY which focuses on people working together to create high quality, value-added products that deliver the ultimate RV experience.

Sustainable Manufacturing

An important objective to our strategy and operations is to implement economically sound manufacturing processes to reduce/ recycle waste & conserve energy and natural resources.

Corporate & Social Responsibility

We foster a business environment in which we focus on and practice:
 - Ethical Labor Practices
 - Teamwork
 - Philanthropy
 - Volunteering

Culture & Values

We are a forward thinking company committed to fostering a culture of teamwork. By being transparent, we encourage our employees to think outside the box and make a difference!

Quality & Construction

Our team takes pride in each unit we build. Our manufacturing standards and point to point inspections ensure each EAST TO WEST brand is built to the same quality specifications every time.

Our Commitment

We strive to provide the highest quality products at the best possible price to our customers. We invite you to be a part of the EAST TO WEST family and we look forward to exceeding your expectations!

WE ARE SENDING OUT 12.11.24 VERSIONS, ANYTHING EARLIER PLEASE DISCARD.

EACH NEW FOREST RIVER PURCHASE PROVIDES:

- ✔ Pre-delivery Inspection. ✔ Digital Owner's Manual.
- ✔ Free Membership to Forest River Owners Group (FROG).
Learn more at www.forestriverfrog.com.
- ✔ A Contribution to Care Camps Foundation www.carecamps.org.
- ✔ 1 Year Free Roadside Assistance from Date of Purchase.



SPECIFICATION DEFINITIONS:

Scan this barcode using a QR reader on your smartphone to learn RV terminology and more!



LEARN MORE:

Scan this QR code with your mobile device to learn more about Forest River.



All information contained in this brochure is believed to be accurate at the time of publication. However, during any model year, it may be necessary to make changes to the manufacturing process of the units and information in this brochure. Your unit may differ from the information in this brochure due to any changes in the manufacturing process and equipment. Forest River, Inc. reserves the right to make all such changes without notice, including prices, colors, combinations, materials, equipment and specifications of any model as well as the addition of new models and the discontinuance of models shown in this brochure. Therefore, please consult with your Forest River dealer and confirm the availability of any materials, combinations, designs, or specifications that are meaningful to your purchase decision. © 2025 [Range Brand], a Division of Forest River, Inc., a Berkshire Hathaway Company. All Rights Reserved. Forest River, Inc. 01/25